



The Nevada Conservation Credit System (CCS)

GRSG Habitat Management Area Maps

Sagebrush Ecosystem Technical Team (SETT)
April 17, 2025

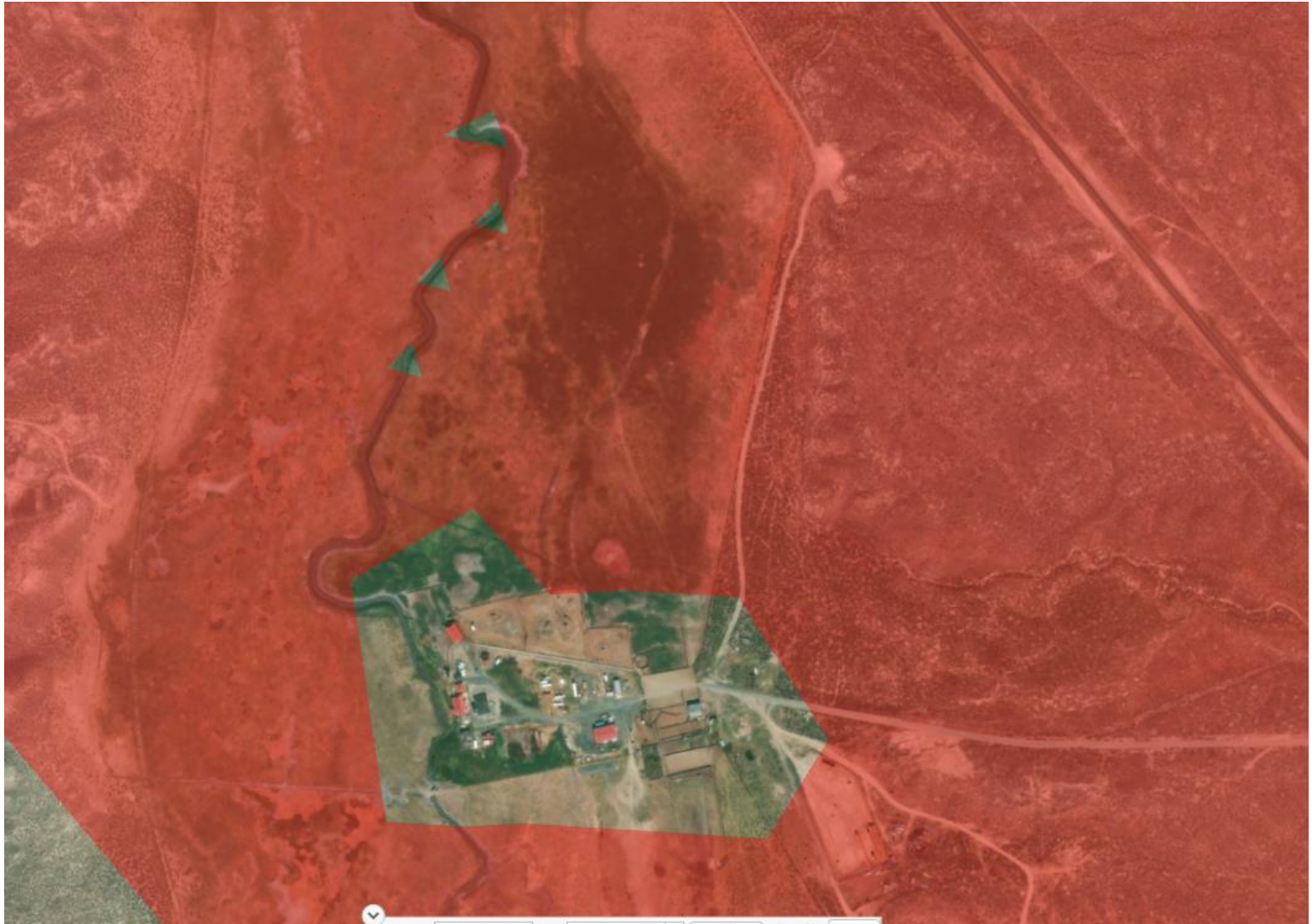
Background

- Updated GRSG Habitat Management Area (HMA) map was implemented in January 2025 with v2.0 release of tools and documents
 - The map is based off a model, which is our best approximation of reality at present
 - As with any update, unforeseen issues may arise that need to be addressed

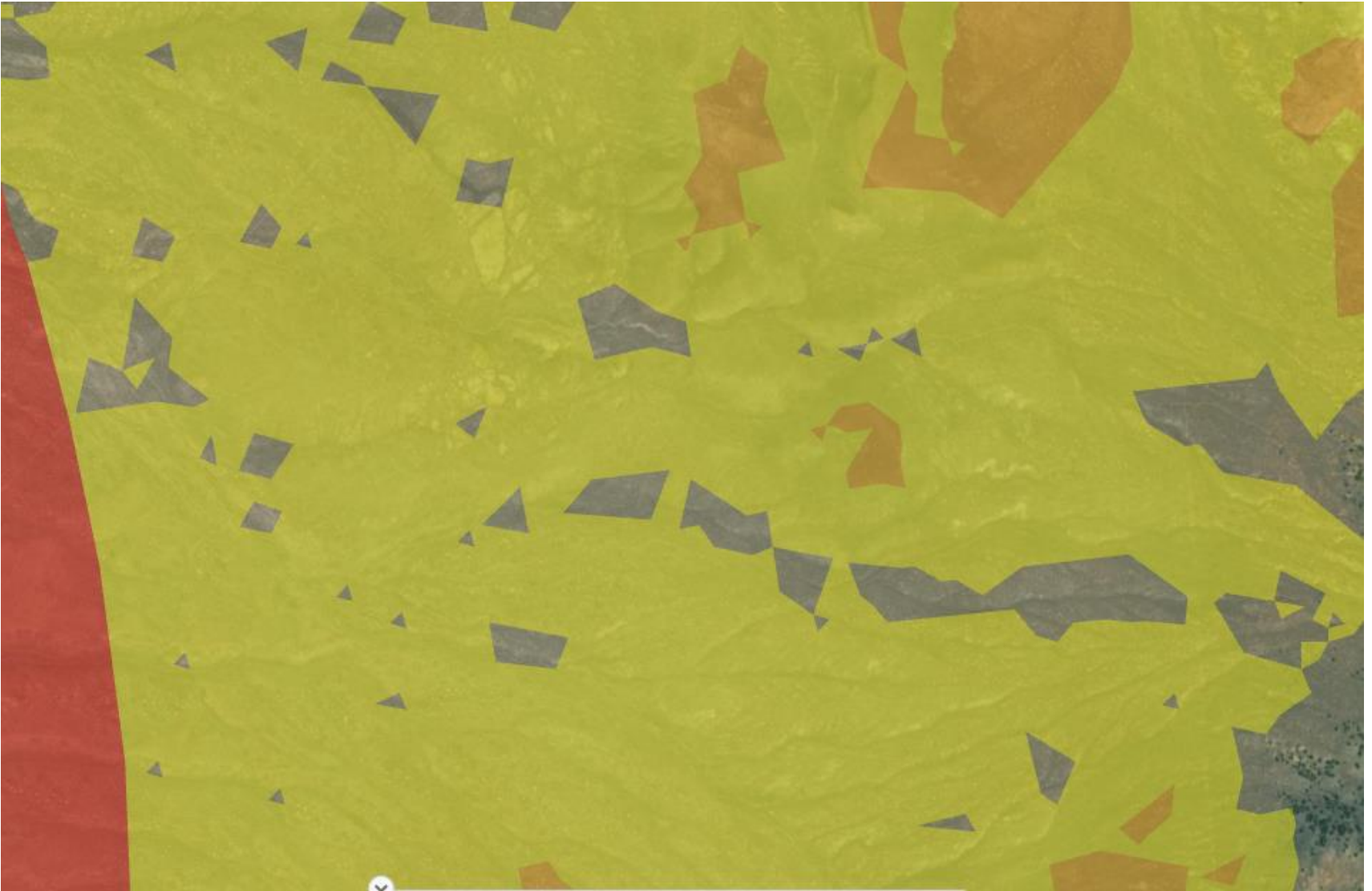
Issue 1

- Some small (<20 acres) areas within seemingly contiguous GRSG habitat have been excluded due to model parameters
- Creates 'holes' in GRSG habitat and map units
 - Reduces acres and credits/debits calculated in contiguous GRSG habitat
 - Complicates credit project management when many small areas are cut out of map units

Example 1



Example 2



Proposed Solution

- Worked with USGS to smooth the interior of GRSG habitat to remove the holes
- Maintained the level of detail originally approved but filled in gaps within contiguous GRSG habitat
- Maintained fringe areas and corridors
- Maintained the impermeability layer and buffers around structures as requested by the Counties and SEC

	Original Raster Acres	Smoothed Acres
OHMA	5,534,330	5,883,178
GHMA	4,119,860	4,136,230
PHMA	12,336,500	12,349,765
PHMA +	1,246,080	1,246,135
Totals:	23,236,770	23,615,308

Example 1

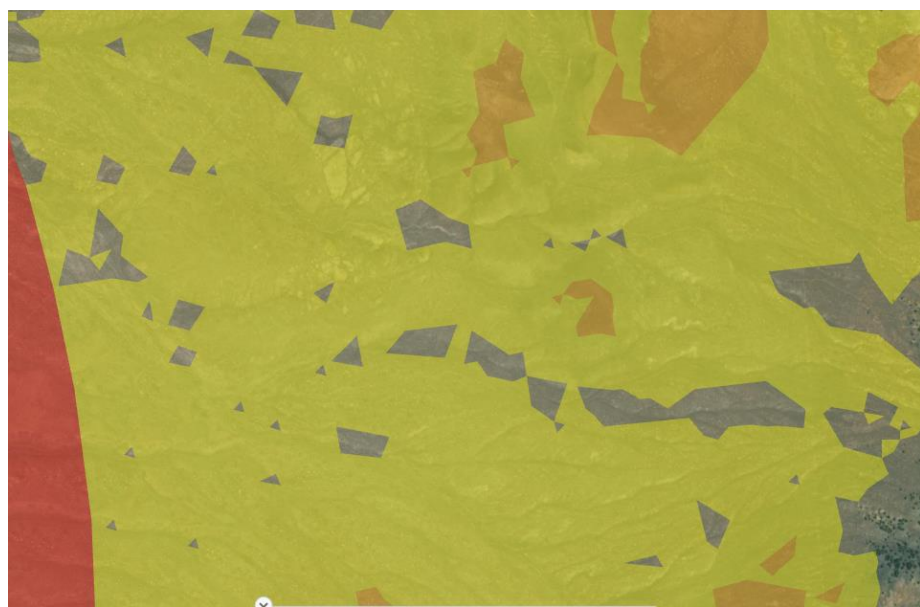


Pre-smoothing

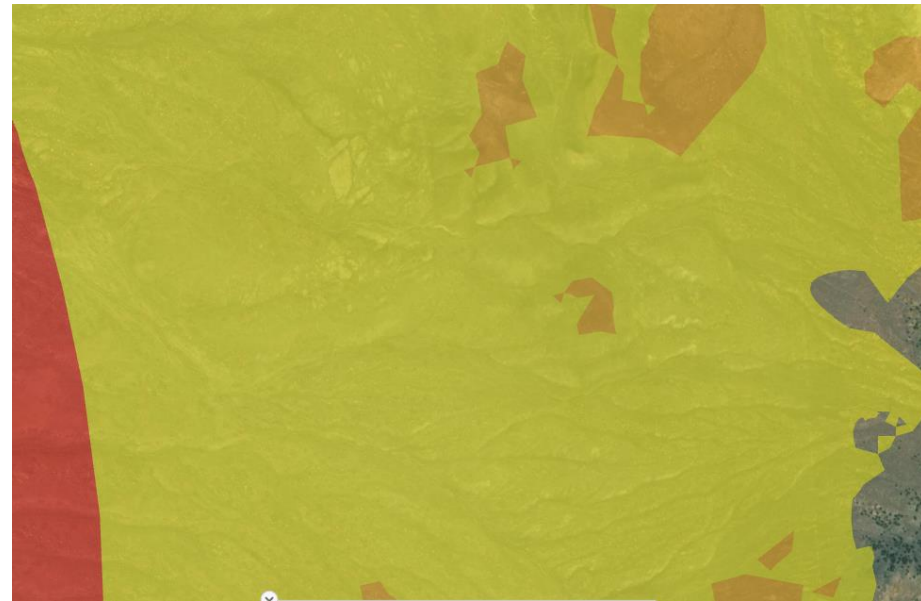


Post-smoothing

Example 2

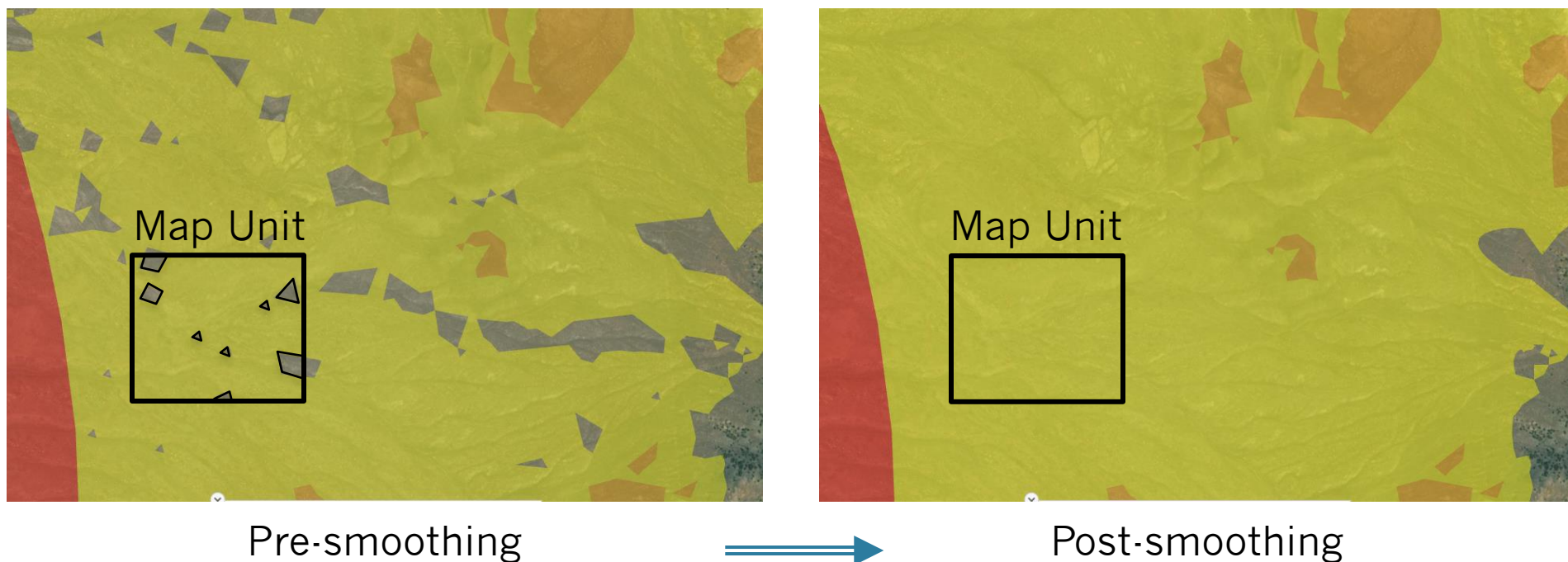


Pre-smoothing



Post-smoothing

Example 2

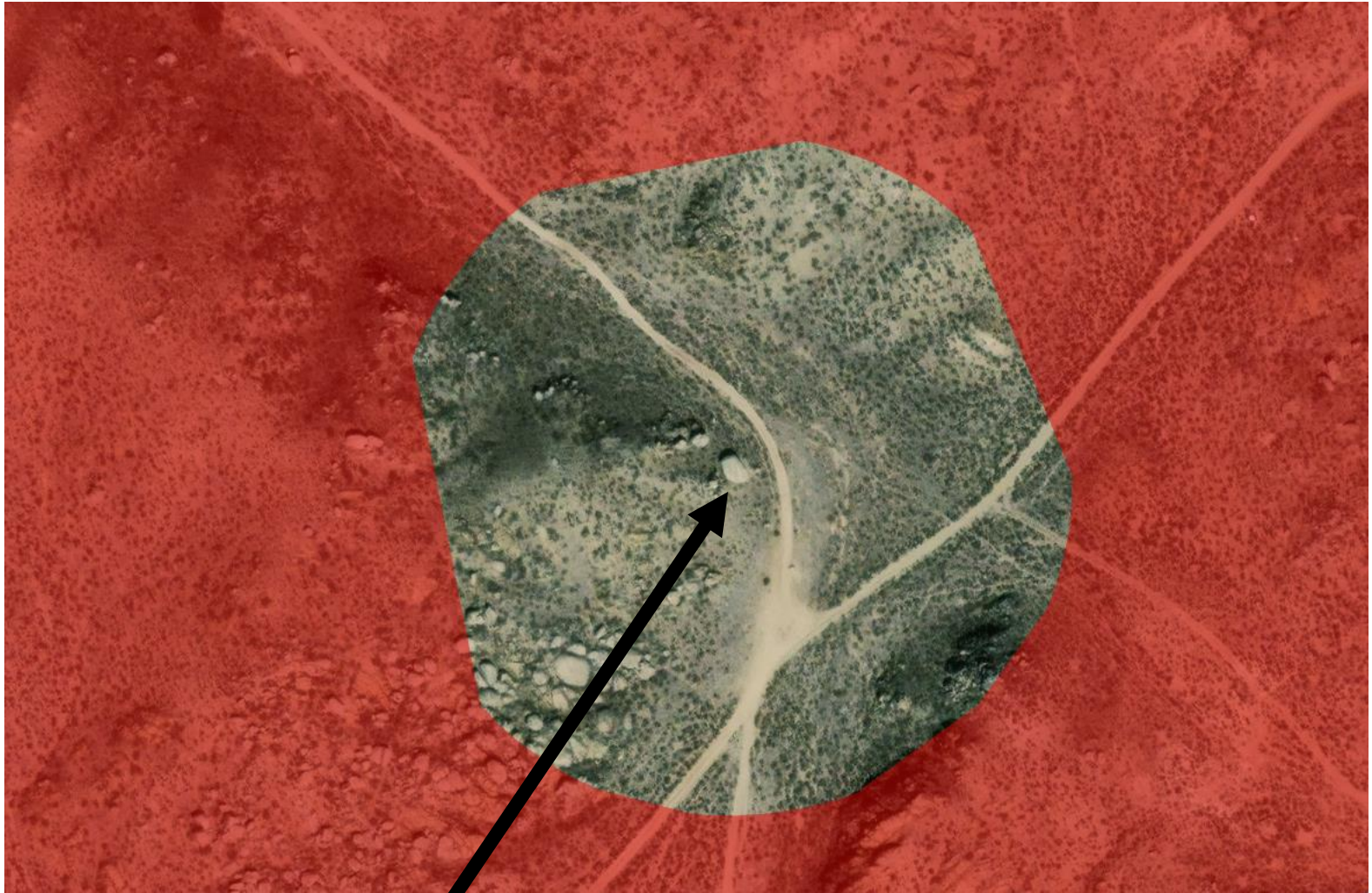


- Would be very complicated to manage this map unit in a credit project.
- Could result in a proponent managing or restoring an area that is not generating any credits to pay for that management.

Issue 2

- In coordination with the counties and SEC, the HMA maps were adjusted to remove structures, and apply a 100m buffer around them, from mapped GRSG habitat
- Some areas that are not structures are being perceived as structures and removed
 - Rocks
 - Remnants of past ground disturbance or mowing
 - Corrals/Exclosures/Stackyards
- Some structures may not warrant the 100m buffer
 - Singular or abandoned structures within contiguous PHMA

Examples

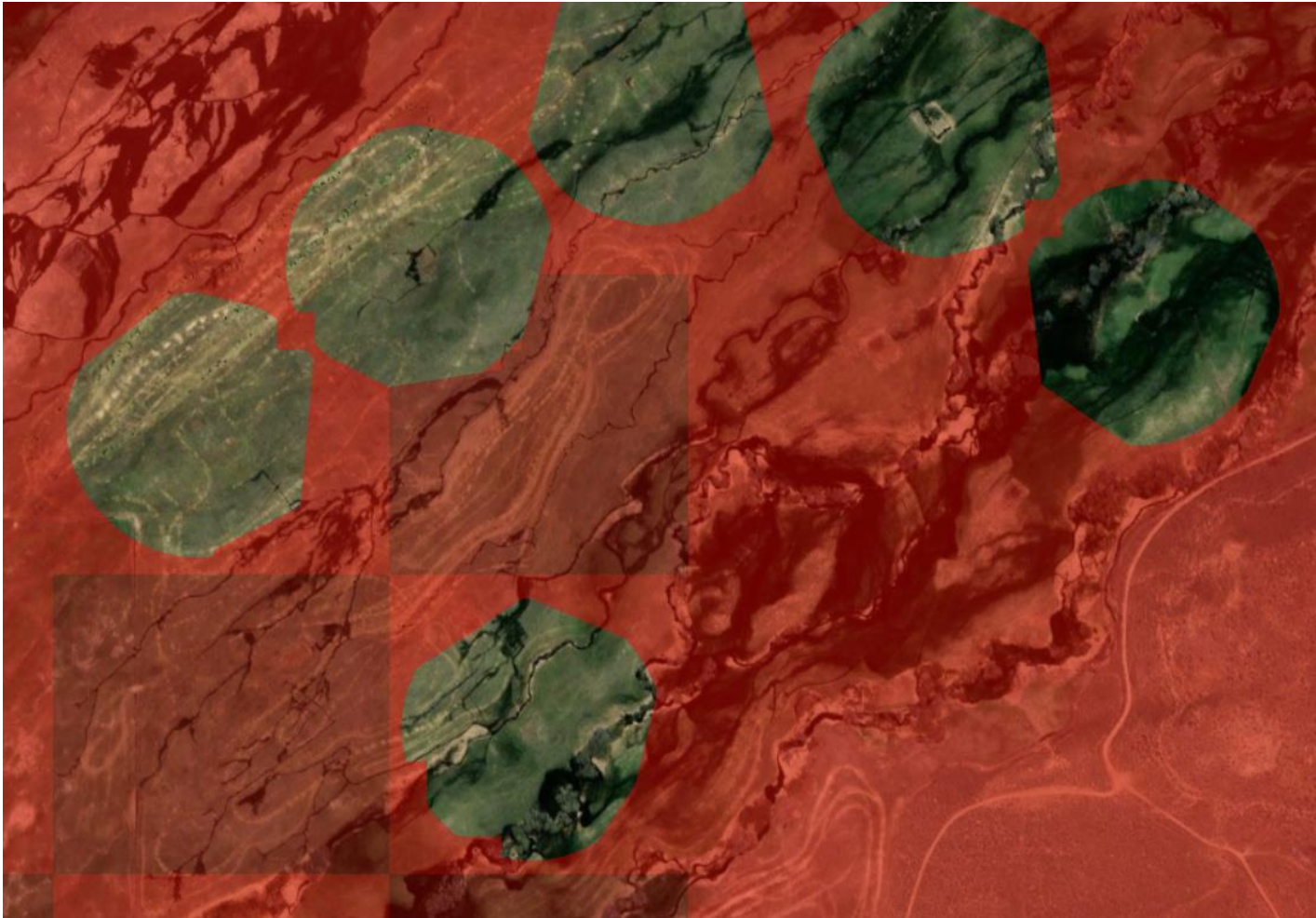


Large rock

Examples



Examples

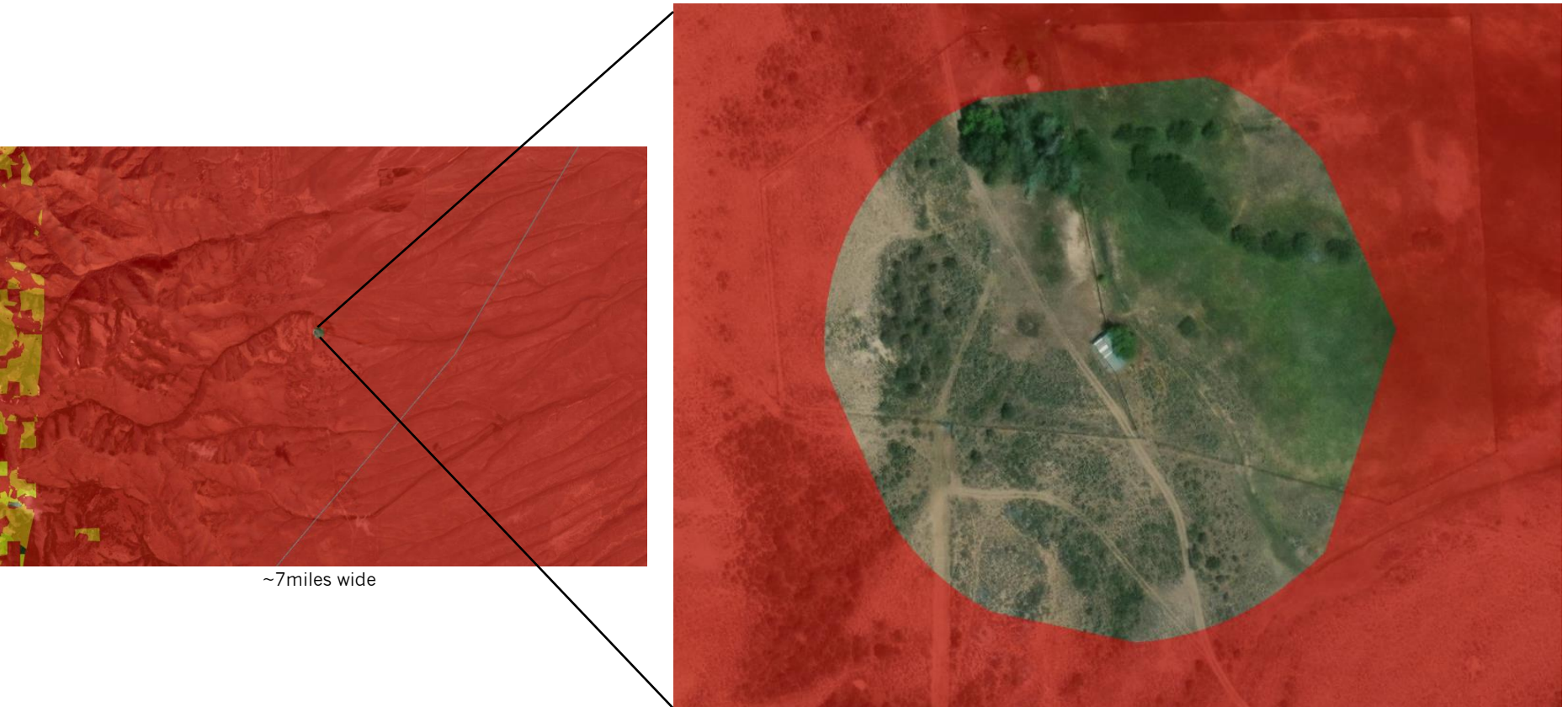


~30 acres are carved out of this meadow and are not considered GRSG habitat; would skew credit/debit estimates in this area, and would complicate management of this as a credit project

Examples



Examples



Removes ~3 acres of meadow from being considered GRSG habitat

Proposed Solution

- Request to use Staff discretion to correct these areas manually if/when they arise within projects
- Would be on a case-by-case basis since the model cannot differentiate these areas

QUESTIONS?

THANK YOU!